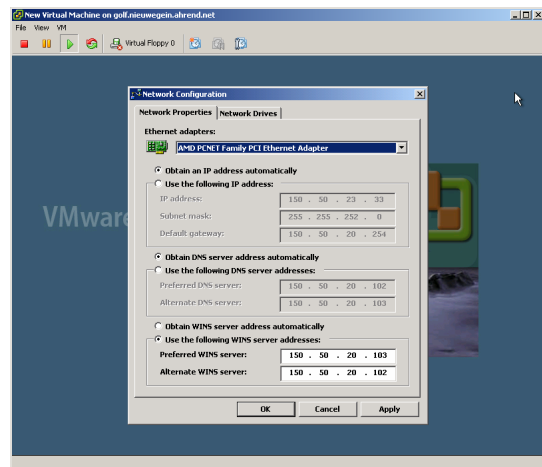
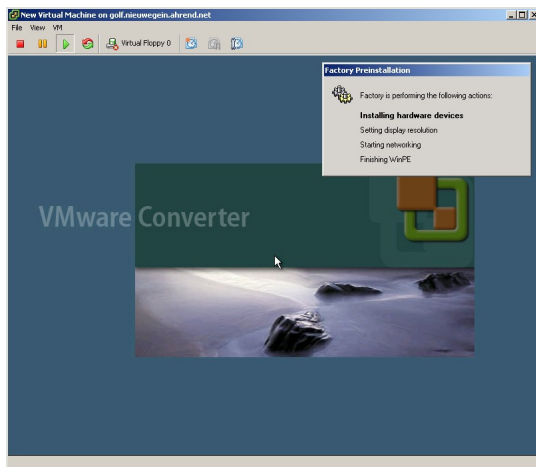
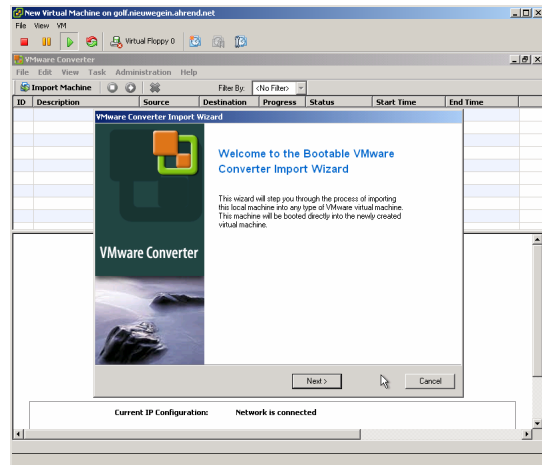
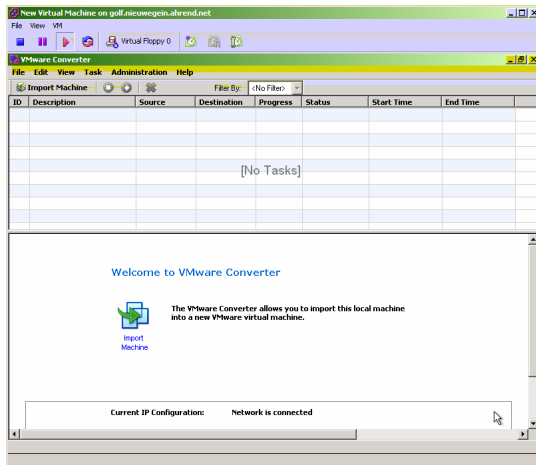


## Cold Cloning and the Converter Boot CD

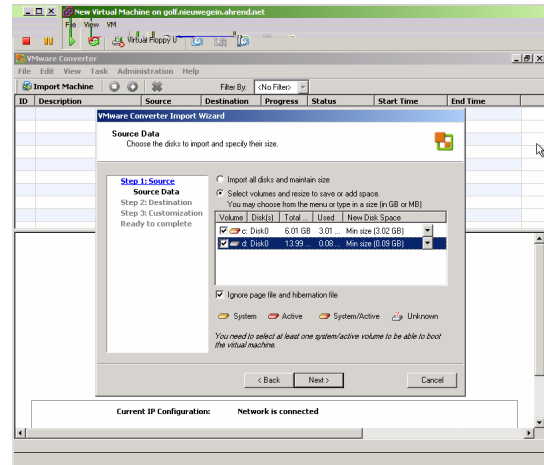
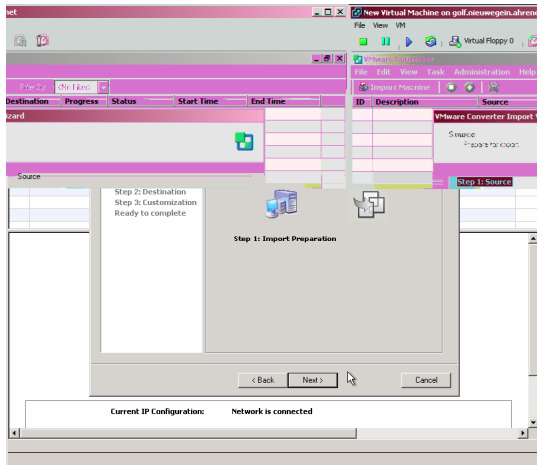
The first thing to have to do is buy the enterprise license witch contains the VMware Converter Boot CD. After that I connected the ISO image to a virtual machine to make the screen dump process a little bit easier. Then you can power up your physical machine with the CD who will boot automatically, after a while you are presented with a Windows PE screen. Then you are asked to provide an IP address for the temporarily Windows PE host so you can send the image of your physical machine to another place on the network.



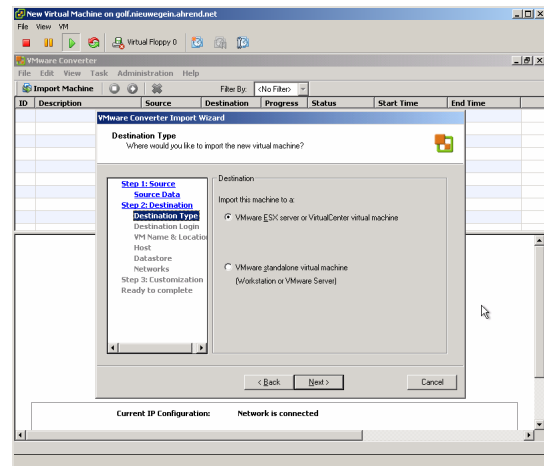
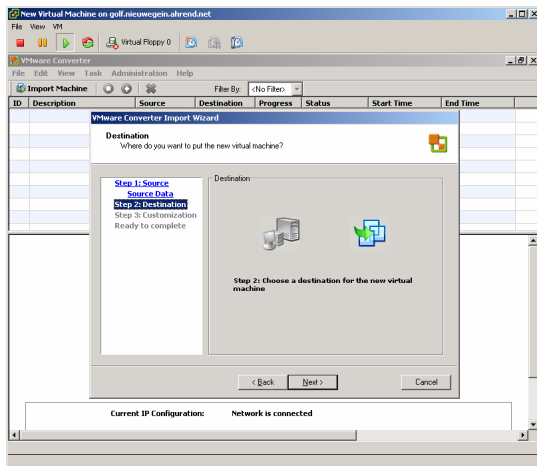
After you click on the "OK" button the VMware Converter will start (on Windows PE) and your can start with Importing your physical machine. Just hit the "Import Machine" button and you will see the wizard.



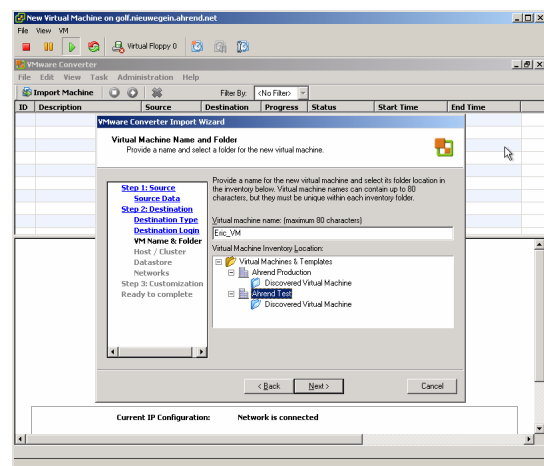
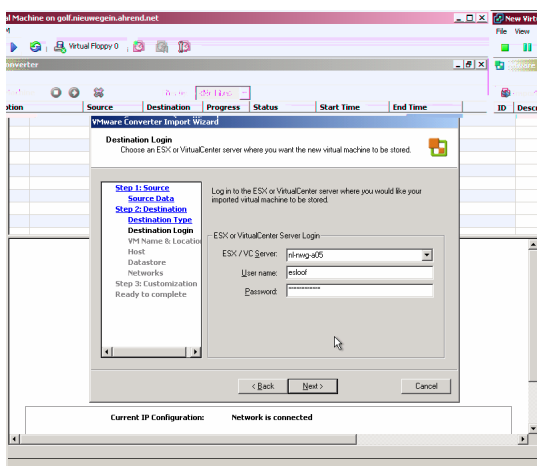
This document is written by Eric Sloof [www.ntpro.nl](http://www.ntpro.nl). Warning: As ever my documents are released as is and without warranty



Hit the "Next" button and select the select the disk and sizes of your new virtual machine.

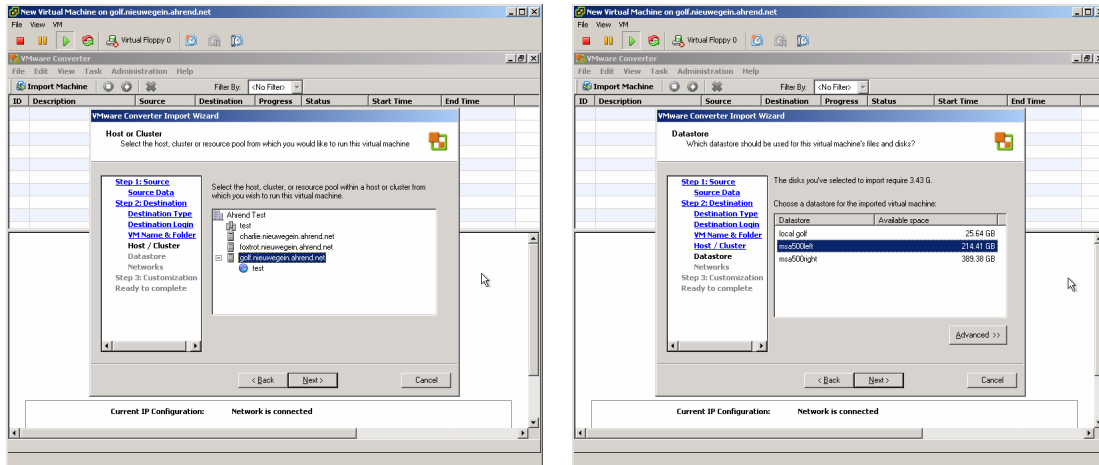


Select the destination where the copy of your physical machine is going to be built. This location can be an image or a new VM on a Virtual Center- or ESX server.

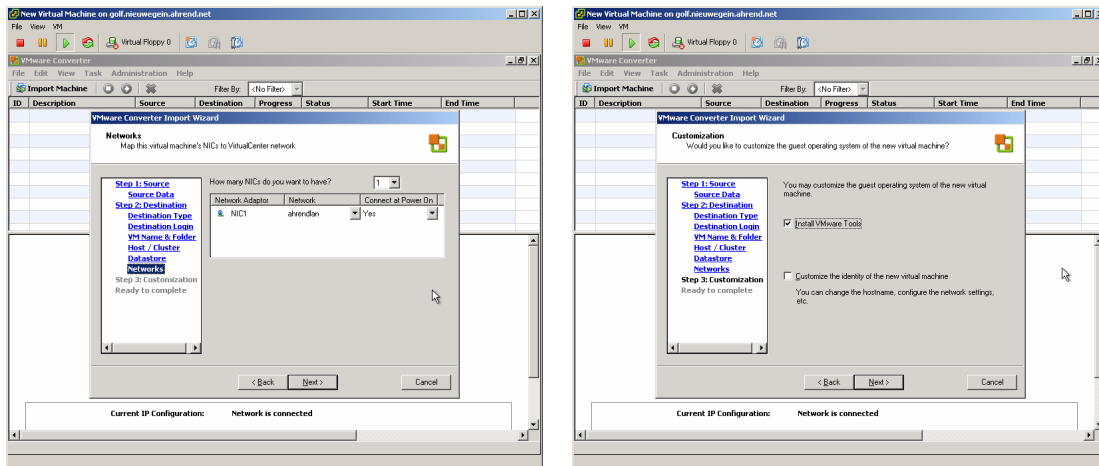


Fill in the name of your VC server and put in the right credentials, after that choose the location where your new VM is going to be placed.

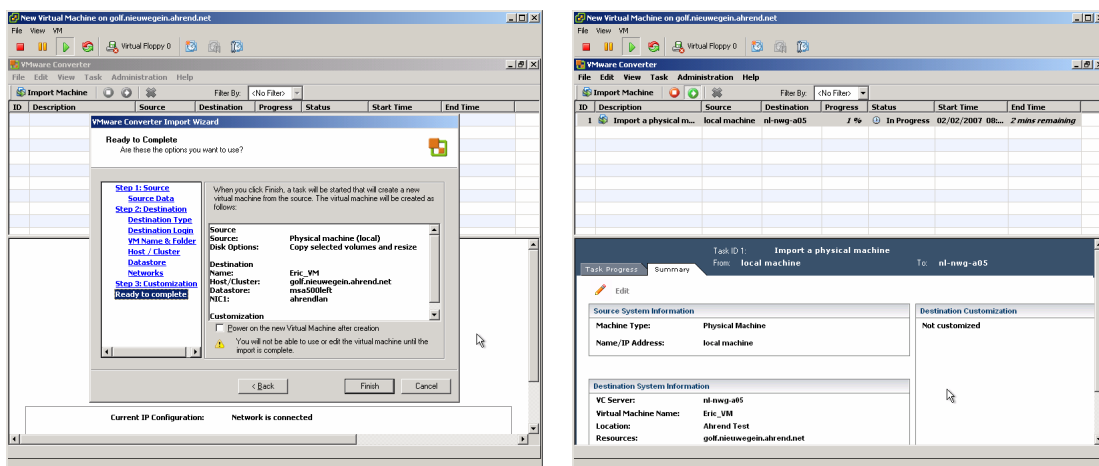
This document is written by Eric Sloof [www.ntpro.nl](http://www.ntpro.nl). Warning: As ever my documents are released as is and without warranty



Choose a host, cluster and resource pool for your new VM and select the storage.



Select the right network connection and select the "Install VMware Tools".



Check all your setting and lets Rock and Roll or hit the "Finish Button". Depending on the size of your disks on the speed of your network the P2V action will take some time, after that your new VM (an exact copy of your physical machine) is up and running :-).